



TIGER

CUB

University of Missouri
Saint Louis Campus

SEPTEMBER 30, 1963

VOLUME 4 NO. 2

LIBRARY - REFERENCE

UNIV. OF MO. - ST. LOUIS

8001 NATURAL BRIDGE ROAD

ST. LOUIS, MISSOURI 63121

Student Senate Elections Second Week of October

During the first part of the second week in October students of the St. Louis Campus will elect Student Senate members. The elections will run from 8:00 a.m. to 3:00 p.m. in the main lounge. At this time an equal number of freshmen and sophomores will be elected to the Student Senate. An equal percentage of freshmen and an equal percentage of sophomores will be elected to the Senate in future elections if the Constitutional Amendment, voted on by the Senate at the end of last semester, is ratified by the Student Association during the coming elections.

Friday was the last day interested students could pick up Senate petitions....The petitions, were available in room 127, and had to be signed by at least ten or more members of the respective classes and turned in to the student activities office by 3 p.m. Friday.

According to the rules of the Constitutional Amendment, freshmen petitions may be signed only by freshmen and the same is true for sophomores. Each person is allowed to sign only two petition sheets.

After the petitions are turned in and before the Senate Elections, candidates running for office will have to fill in a mimeographed sheet stating their qualifications. The names of the candidates will then be placed on the ballot for voting.

Bill Ebbinghaus, President of the Student Association, urges everyone interested in school politics to run for the Senate and everyone to let his voice be heard by voting in Senate Elections.

The Senate will hold its meetings on alternate Monday nights at 8 o'clock.

Two of the nine changes made in the by-laws of the Constitution at the end of last semester are: "Any Senate Member having two or more unexcused or a total of three absences, excused or unexcused, during the member's term of office, may be impeached by a majority vote of the Senate members present at a meeting in which a quorum is represented, and "The power to excuse a Senate member shall be invested in the President..." The purpose of these two revisions is to guarantee better attendance at Senate meetings.

The by-laws of the Constitution are ratified only by Senate members because they are to only people involved, whereas, Constitutional Amendments are proposed by the Senate for the Student Association and must be approved by a percentage of the entire membership of the S.A.

Book Store Open 9 till 1

After conferring with Dean Bugg, Mrs. Fred Pilger, director of the University bookstore, has announced that the bookstore will be open daily from 9:00 a.m. to 1:00 p.m.

Mrs. Pilger regrets that all the books have not arrived for some classes as yet but she expects them soon. Assisting Mrs. Pilger in the bookstore are Bill Nichols, a sophomore from Riverview Gardens high school and Marceann Killian, a freshman from Cleveland high school.

Campus Convocation and Orientation Begin School Year Foundation for Intellectual Status Set by Dr. Hamlin

The 1963-64 school year at the St. Louis Campus of the University of Missouri officially began Monday, September 16, with the Convocation conducted for all students.

Mr. Bill Ebbinghaus, President of the Student Association, opened the ceremony by greeting the students. He then introduced Mr. C. E. Potter, Principal of the Normandy High School and past administrator of the University. Mr. Potter commenced with a challenge to all students. He mentioned the dedication which took place the previous day and expressed his belief that the St. Louis Campus would be a great educational institution.

Ebbinghaus then introduced Dr. James L. Bugg, Jr., Dean of the St. Louis Campus. After a few opening remarks, Dr. Bugg stated two reasons why he particularly liked the credentials of the incoming class; the first being their initial step in college together, and the second being their reception of degrees in 1967 as the first graduating class of the St. Louis Campus.

Dean Bugg predicted the school to be a community of scholars. He stated that the student should make an effort that will consist of understanding his fellow man. Advancement in educational enlightenment, and genuine scholarship composed of patience, hard work and drudgery, aid in this effort. He then emphasized that responsibility and freedom go hand in hand, one must become materialistically orientated. He stated the purpose of the college was not merely teaching the student how to make a living, but teaching him how to live.

Student Orientation

Monday afternoon at two o'clock, the Student Orientation took place. Bill Ebbinghaus, opened the program with a talk concerning the organization of the Student Association by saying, "To be a student at this university entitles one to be a member of the Student Association."

Bill stated that the organization began during the first year of the school's existence. He outlined it's functions toward it's members, the students, and briefly explained the three divisions of the Association in the social, service and political aspects.

The social order is responsible for intramural sports, mixers, dances, and the sponsorship of all other campus functions and organizations. The intramural program will consist of touch football games in the fall, basketball in the winter and softball and volleyball in the spring. The tentative schedule for dances includes plans for a Fall, a Winter, a Christmas, a Spring and a Homecoming dance reaching its climax with the presentation of the Inaugural Ball for the new student officers in May.

The purpose of the service branch is to furnish a Buzz Book, to organize car pools and to provide a book pool, at semester break for students who wish to sell their used books. Finally, the political order of



Dr. James Bugg addresses students at the Student Convocation which was held Monday, Sept. 16.

the organization has the responsibility of setting up a governing system by which all the members of the Association are obliged to follow. This system is divided into three main branches: the executive (student officers); legislative (the Senate) and judicial (the Supreme Court). Also included in this governmental system will be a Student Advisory to whom members of the Association can bring their problems.

Student Organizations

Emily Massa, secretary of the Student Association, explained the expectations of this year's cheerleading staff. Miss Massa was followed by Sophomore Carole Karal who briefly described the operations of the school newspaper, the TIGER CUB, which endeavors to act as the corresponding link among the students and between the students and teachers of the St. Louis Campus.

Sophomores Rich Heinrich and Bill Fusner followed with a report on the yearbook, LANDMARK, and the progress which has been made to assure a 1964 publication. Next on the agenda was Al Becker, President of the Dramatic Club, who presented plans for a play each semester coupled with skits for other student activities.

Dr. William Hamlin, Director of the English Department, emphasized in his talk the importance of maintaining a steady climate for knowledge. He went on to further state in his opinion the six main qualifications for attaining this desired status, integrating student attitude as the primary objective.

The remaining five points of Dr. William Hamlin's were: humility, conformity, academic honesty, assimilation of student knowledge and the necessity in the use of student facilities, such as the library, comprised his qualifications in obtaining this goal.

Library Booksale

During the early part of October the library will sponsor a book sale. As in previous years the money will be used to buy books that the library could otherwise not afford.

Student donations for this sale may be either paperback or hard bound and can deal with any subject, fact or fiction, as long as they are still in good condition.

A few days before the sale is to begin large boxes will be placed around the building for the deposit of these books. The books will then be sorted for the sale.

Miss Helen Silverman, St. Louis Campus librarian, announced that proceeds from this year's sale will purchase recreational books on such subjects as basketball, bridge, and music. Last year's proceeds purchased fine arts books.

This sale will not only enlarge the library collection of books, but will also allow the students to enjoy a larger scope of literature. The key word for this book sale is donations. The sale will benefit you alone and the success of it depends upon you.

Details concerning the sale of these books will be published in the next issue of TIGER CUB.

Circulation of Campus Buzz Book Forseen

Bill Ebbinghaus, president, and Gerald Stimson, vice-president of the Student Association have stated that the St. Louis Campus Buzz Book will be put into circulation soon. The Buzz Book, published on the mimeograph machine as last year, will sell for a quarter and will contain all the names, addresses and telephone numbers of the students attending the St. Louis Campus this semester. However, the faculty's names, addresses and telephone numbers will be omitted.

Sharon Stephenson, past vice-

Campus Enrollment 630 Full & Part-time Students

At registration September 12 and 13, 630 students were enrolled either on a full-time or a part-time basis. The office staff, Columbia cashiers and St. Louis Campus faculty were present to register the students, many of whom made program changes.

The TIGER CUB sold 280 subscriptions to students wishing to hear all the news as it comes up throughout the year. This year the TIGER CUB staff will not distribute the paper on the honor system but will require each subscriber to present his card and have the issue number punched before receiving his paper. Papers may be picked up in Room 127 from 8 a.m. to 2:30 p.m.

Non-subscribers can purchase individual papers for 20 cents each, or buy the yearly subscription to 15 issues for \$2.00.

The yearbook representatives sold 293 subscriptions as of Friday, September 13. Co-editors Rich Heinrich and Bill Fussner stated that applications will be taken until Wednesday, October 2, at which time a staff will be

chosen. An assistant editor has already been announced, Freshman Judy Zahner. Miss Jane Parks, English instructor will serve as the LANDMARK's advisor. Yearbooks may be purchased in the Lobby September 30, and October 1-2 for \$4.50, \$2.00 down and \$2.50 before the end of the semester. Beginning October 3, yearbooks will cost \$7.50 and may be purchased in the S.A. office.

Both the TIGER CUB staff and the LANDMARK staff had meetings last Monday to meet with future members of their staffs. The staffs for both the yearbook and newspaper will be printed in the next issue of the TIGER CUB.

80% of Student Body

As a Commuter college the percentage of those students driving to school is high, however, at the St. Louis Campus it is approximately 80% of the Student Body. Of the 670 students on campus there are 571 cars with U. of Mo. car stickers.

A small number of the stickers purchased were duplicates.

Timetable

- SEPT. 30-- Yearbook staff meeting room 127.
- OCT. 1--2 p.m. Jazz club room 206.
- OCT. 2-- Football meeting 3 p.m.
- TUESDAYS-- Cheerleading practice at 3 p.m. on the Tennis Court.
- OCT. 11-- Next issue of the TIGER CUB.

Student Apathy

Students of the St. Louis Campus seemed to be indifferent to the happenings which occurred at school during the first few days. The things which usually cause excitement to students upon entering college life appeared to be thought of as a task instead of something new and exciting to the majority of students. In past years they were a mature group who had grown out of the high school stage and graduated to the college level. They realized the importance of their behavior on campus and their courtesy toward the faculty and student officials.

The first expression of this new trend toward apathy could be seen at the New Student Orientation in the purely high-schoolish atmosphere which prevailed among the audience who appeared as a restless mass of high school students cast into the awesome reality of campus life. The whispering and giggling during speeches coupled with the disturbance caused near the end of the Orientation, when everyone decided to walk out has lessened the opinion of many student officials as to the maturity of the freshman class.

Was it the lack of response and courtesy toward the speakers, who had spent many hours of preparation to present to the new students the broad aspects of college life, or the prevailing air of disrespect for the student officers which prompted these reactions.

Those of us who have attended the college for either one or two years feel that this change has downgraded the status which has been established by previous students.

The first show of ingratitude had been dealt at Orientation but it was quickly followed by another demonstration, the Pool and Patio party. It seemed like something much different from that expected of college students, similar, in fact, to a high school teen-town. Students of both sexes gathered into their own little groups on either side of the dance floor, and had it not been for a few minutes of folk singing the party could have been a flop.

You are out of high school, you are a college student at the newest and most talked about branch of Missouri University. You are liable not only to the school, but to the community for your actions. The impression you make must be on the college level.

Campus life requires a great deal of each and every student. Many things have been made available to the student and they exist solely for his benefit. Campus activities range from physical fitness through inter-collegiate sports and intramurals, to an advancement of knowledge through the various organizations and clubs which have appeared in the last few years.

Several activities which are open for student support are the TIGER CUB, the Student Senate, the Engineers Club, Landmark, inter-collegiate basketball and intramural sports. Each of these organizations needs your interest and most important your support. Help your school and help yourself.

Before



After

Campus Expenses

If we were to make a list of our school expenses for the coming year, we would probably hit upon a total somewhere around \$450.00 to \$600.00, depending on the individual. This money includes tuition, books, food, transportation, and miscellaneous activities. It may seem like a lot of money to some people; yet when we consider what goes into our education and all that we will get out of it, we really haven't lost money. We have gained a vast source of knowledge and experience which, in future years, will be invaluable.

We all realize the necessity of a college education or we wouldn't be here. Some students are fortunate enough to have their parents give up a new house or car so they might have a good college education. Many other students, however, manage to put themselves through school while working at a part-time or a full-time job.

We must realize, whether we put ourselves through school or our parents help us out, that doing our best is imperative. We must be determined to get the most out of our studies, and to take advantage of every opportunity which is afforded us. Our education is a sound investment; if we do our best, we will receive innumerable dividends. If we become masters over our subjects, we shall gain monetary as well as mental benefits.

Many students feel that the money they spend for their education does not equal the benefits they receive. This is an important point to think about, for it is best for those students to invest their money wisely.

Objectivism: The Philosophy of Ayn Rand

The Nathaniel Branden Institute is an organization that offers lecture courses on "Objectivism" and its application to the social sciences. At present, courses on "Objectivism" are given by the Institute in more than thirty cities in the United States and Canada. Outside New York City, these courses are offered through NBI's Tape Transcription Division.

In addition to "Basic Principles of Objectivism" given by Mr. Branden, he and his associates offer such courses as "Basic Principles of Objectivist Psychology," "A Critical Analysis of Contemporary Psychology," "Principles of Efficient Thinking," "The Economics of a Free Society," "A Critical History of Philosophy," and "The Esthetics of the Visual Arts."

Since 1958, more than 5,000 students have taken courses at Nathaniel Branden Institute. Analysis of enrollment statistics indicates that the average age of students is the early 30's. About 25% are college students; 56% are professional adults; teachers, lawyers, doctors, businessmen, writers, artists, actors, psychologists, psychiatrists, and scientists.

To date, 30,000 people are on the mailing list of the Institute and regularly receive reports on its activities. The Institute publishes essays and lectures

on philosophy and the social sciences.

"Objectivism: The Philosophy of Ayn Rand" the subject of a talk by Nathaniel Branden, distinguished author, lecturer, and teacher of psychology, will be presented by tape transcription, at 7:30 p.m., Monday evening, October 14, at Hi-Fi Showroom, 6383 Clayton Road, in St. Louis. The talk will be open to the public at \$2.00 per person.

Ayn Rand is the author of THE FOUNTAINHEAD, ATLAS SHRUGGED, FOR THE NEW INTELLECTUAL, and other works. Nathaniel Branden is the author of WHO IS AYN RAND?, a study of Miss Rand's works from the standpoint of ethics, psychology and esthetics; the book also contains a biographical essay on Miss Rand written by Barbara Branden. Mr. Branden is the founder of Nathaniel Branden Institute, and is also co-editor, with Miss Rand, of The Objectivist Newsletter, a monthly journal of ideas.

Mr. Branden's lecture will deal with such ideas as What is philosophy? The bankruptcy of today's culture--The nature of Objectivism. It is the first in a series of twenty lectures to be presented in St. Louis.

Students of the St. Louis Campus, interested in the philosophy of objectivism, are encouraged to attend this prime source of instruction.

TIGER CUB

Fighting for the Growth of the Student in the School and the School in the Community

Co-Editors.....Carole Kral
Kathy Connally

Feature Editor.....Dave Hart

News Editor.....Pat Knarr

Assistant News Editor.....Frank Kraft

Editorial Staff.....Dave Deptker, Dot Huffstuler, John Wallner, Lou Niederberger, Adele Szots

Sports Editor.....Larry Ryan

Business Manager.....Al Becker

Photographer.....Tom Chronister

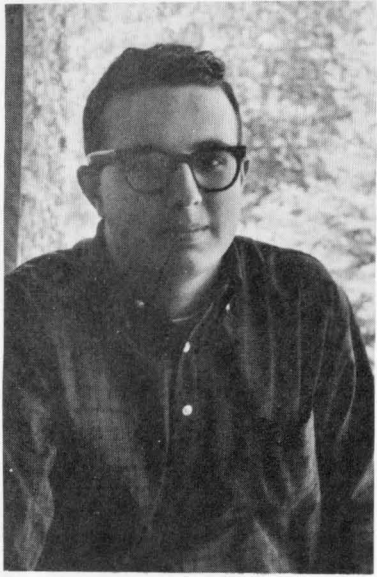
Printer.....Grand Publications

S
U
P
P
O
R
T

T
H
E

L
A
N
D
M
A
R
K

Becker Hopeful for Year



Al Becker

At the meeting plans for the coming semester were made. It was decided that the group will do three one act plays. Mr. Chisholm, along with Penny Halland, Toni Indelicato, Rita Berry and Al Becker will select the three plays to be done. Al Becker, president of the club, hopes to do Edward Albee's Zoo Story as one of the 3 plays. Zoo story shocked off-broadway audiences for almost 2 years and was enjoyed by many students who saw it presented last year at the Crystal Palace.

Mr. Chisholm stated that work on the plays would begin immediately. The group hopes to present the plays at such a time that they will not interfere with the time schedule for finals. Several members of the group has stated that they hoped to do either a Street or Desire next semester.

Friday at 3:00 the club held its second meeting. It was held for the benefit of club members who were unable to attend because of yearbook or newspaper meetings Monday. All members had to attend if they wished to participate in the drama groups activities...

On Monday, Sept. 23, the St. Louis campus drama group held its first meeting under the direction of its new advisor Mr. Scott Chisholm, St. Louis Campus English instructor.

Student Support For Lecture Series To Begin Soon

The "Daytime Lecture Series," headed by Mr. Armbruster, will soon begin its second year of operation. This series of lectures and discussions was started last year upon request by students for more intellectual activities on Campus.

Some topics submitted for last year's discussions included English, Psychology, Problems of the Modern World, Guidance, and Vocational Opportunities.

The time and room number for each lecture will be published in the next issues of the TIGER CUB. All members of the St. Louis Campus are invited to participate.

Letters to Editor Welcomed by T.C.

The Tiger Cub welcomes letters on any subject from the student body. These letters should not be over two hundred words in length and must be signed. The Tiger Cub regrets that it will not be able to publish any unsigned letters. Although the Tiger Cub will not publish any unsigned letters, it will omit the signature if requested. All letters addressed to the newspaper may be placed in the Tiger Cub box in the office, or it may be brought directly to the Student Association office.

Miss Lone Joins Staff

Miss Jacqueline Lone, a part time instructor at the St. Louis Campus took her initial two years of college at the University of Nebraska and transferred to the University of Colorado for her junior year. She received her B.A. at the University of Missouri and her M.A. at Washington University. She teaches Spanish and hopes to go to Mexico next summer.

Mr. Joseph Woo, a part-time instructor in Philosophy, graduated from high school in Hong Kong. His college debut was at Taiwan Normal University he is currently attending Washington University on a University Fellowship. He acquired his M.A. AT Washington University in Philosophy.

In comparing the United States and Wai Tan educational systems, Mr. Woo stated that the college students in this country begin to specialize for their degree much later than students in Wai Tan. In his freshman year, he had nine credits in his major field and stated that all students had at least two or three courses in their major field.

Too Gung-Ho!

By Dave Hart

This is the first of a series of articles intended to acquaint the students of the St. Louis Campus with the opportunities offered by the United States Armed Forces Reserve programs. For reasons some students may realize, my first objective in this analysis is the Marine Corps Reserve. From first hand experiences I will try to relate as much as possible concerning the molding of a special breed of men from their first day as a recruit in boot camp to the experiences encountered after boot training.

Marine Corps training is tough, loud, and from the very beginning busy.

Throughout the 12 weeks of boot camp, discipline is absolute. To teach the fundamentals of this discipline takes a very special man, the DI, (Drill Instructor). He is the guardian of each and every recruit for whom he is responsible. Without the DI's, the Marine Corps could not exist as it has for so many years. He is the backbone of the organization. Through his efforts there is a development of a recruit into a Marine and this Marine is a mixture of self-reliance and devotion to his fellow Marines. Discipline has remained the same for both reserves and regulars and has never lessened thanks to the exasperated shouts of the DI's which remain loud and plentiful.

Physical demands keep well in line with discipline, for the heart of boot camp is developed on physical training areas. Each day recruits are urged through dozens of push-ups, pull-ups, bend and thrusts, and side straddle hops. Teamwork and competition, two very important characteristics, are emphasized in tugs-of-war and exercise sessions with a 300 pound (iron) logs. To stimulate this physical fitness, emphasis is placed on double-timing, obstacle courses,

and most important a 11 pound barbell called the M14 rifle.

Every Marine is basically a rifleman and to master his rifle is to master his job. But in order to become master of this weapon he must put up with the antics of the range instructor and run the risk of being called either once or many times, an animal, a worm, or possibly a maget.

Upon graduation from boot camp the individual Marine is competent, confident, and cocky. He has become a member of the outfit with a history 200 years old and he is a proud individual. He may not have experienced the reality of two world wars and a conflict, but he does share in one common trait with the salty veterans: He is a Marine.

Foreign powers have said they are hard to understand, difficult to outrage, and impossible to outfight. The reason: the Marine Corps has been called a "religion." "Once a Marine," so the saying goes, always a Marine."

From the first days at boot camp to an amphibious assault, there are sounds of the making of a Marine. Every Leatherneck can recognize these sounds and every American should appreciate them.

Marine Corps training is both good and healthful, not just because of the experiences involved but also because of it's end result: "A Force in Readiness."

Marine Corps Reserve obligations vary with age, and there are many programs of interest, including an Officers Candidate School for college grads. If you are thinking about or planning to join the Armed Forces investigate every program available in each branch. Each addition to this series will endeavor to formulate an opinion of the separate branches.

The subject for the coming issue is a similar sketch of the Army Reserve training program.

Student Religious Organizations

Students attending the St. Louis Campus have the opportunity of attending the various religious classes held on Campus. Two of the groups meeting on Campus are the Newman Club for Catholic students and Gamma Delta for Lutheran Students.

The Newman Club offers the student a religious intellectual, and social program which will increase his knowledge and enable him to develop spiritually and socially. You are invited to join, attend and participate.

This year a completely new approach has been adopted for Newman classes. In each semester, there will be three major groups of classes, six per year. Each group will concentrate on a particular religious problem of the day and analyze it from one or all of three major attitudes: 1) theological, 2) philosophical, 3) cultural-scientific. Each session will last four weeks, during which classes will be held on a particular problem. At the end of this time, a general assembly will be held, and the students will participate in a discussion and panel, so that the three "attitudes" can be broadened to include all.

In the First Semester social, moral and political questions are discussed. This semester the choice for the social question is Integration; for the moral question, Nuclear War and Disarmament; and for the political question, Communism.

Social activities on the agenda include a Newman Club Icebreaker at the Olin Dorm Penthouse at 8:30 p.m. on Friday, Oct. 11, featuring the Raindrops. On Sat. Nov. 2, students may attend

"Football Weekend" at South Bend for the Notre Dame-Navy Game. Every Friday night students from St. Louis Colleges may attend the socials held at Newman House, 6352 Forsyth Blvd. For information about these activities, students may attend meetings held at 12:00 every Wednesday and 11:00 and 12:00 on Thursdays, or contact Mary E. Morris, president.

Lutheran students attending the St. Louis Campus will meet on Wednesday from 12:00-1:00 in room 132 for group discussion meetings. The first series relevant to the Christian faith and to the Christian student is "Present Day Issues."

Joint meetings of the college groups--including University of Missouri-Saint Louis Campus, Washington University, Saint Louis University, Harris Teachers College, and the Junior College District of Saint Louis-Saint Louis County--will be held once a month at the Lutheran Student Center and Chapel, corner of Washington and Skinker, the foundation for college work. The program includes worship, study, service, cultural and recreational events.

The regional study retreat of Gamma Delta, which is the official Lutheran organization for college students, will be held October 4-6 at Knob Noster State Park, with the host chapter at Central Missouri State College, Warrensburg.

Other aspects of the program will be announced as planned by the students.

These activities are scheduled so as not to interfere with the school program, but to perfect and supplement it.

Keep Well

Informed On

Campus Activities

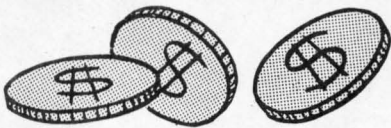
Subscribe To The

TIGER CUB

Subscriptions \$2.00 per year

Non-subscribers 20¢ per issue

Our *best wishes* to you
for a pleasant & profitable year



... And speaking of profits, how about opening a checking account at Normandy Bank so you can keep track of those hard-earned dollars from your Summer job?

Stop in or phone for information.

Normandy Bank 7151 Natural Bridge EV 3-5555

Cards & Gifts for Every Occasion



E.A. Horstmeyer Inc.
Jeweler-Optician
7246 Natural Bridge
EV2-3063
Arthur E. Zbaren

St. Louis Campus Dedication To Missouri University

Gov. Dalton and Pres. Ellis Spotlight Dedication

Due to the research of the past editor of the TIGER CUB, Roy Walkenhorst, the St. Louis campus can trace its history back to the Revolutionary War.

The Revolutionary War in Connecticut produced a young soldier scarcely old enough to shoulder a musket, Daniel Bissell, who eventually became the military commandant of all the Missouri and Illinois territory in the Louisiana Purchase. After his retirement he built an empire that eventually encompassed 2,300 acres. On part of this estate the Bellerive Country Club was born. It was called the St. Louis Field Club.

Incorporated on December 8, 1897, the Field Club was the second of its kind in St. Louis.

The ranch-style homes of the Bissell Hills subdivision now occupy the old nine-hole golf course. The club house is now a busy section of Bellefontaine Road, just north of Chambers Road.

The Field Club had its problems. They called it the Field Club for a very simple reason; it was way out in the fields. To complicate matters Henry



Left to right Mr. James A. Finch, Jr. President of University of Missouri board of curators; Governor John Dalton, President Ellis, University of Missouri, and Mr. Edward Monaco, President of Normandy Board of Education who presided over the dedication ceremonies Sept. 15.

after the birth place of his father in France.

The Club purchased the land at \$400 per acre for land closest to Natural Bridge and \$350 per acre for the land farther north. The cost of building the clubhouse was \$80,000.

All that remained to be done was the selection of a new name, Bellerive. And so in May, 1910 the second oldest country club in St. Louis found a new home, chose a new name and unknowingly laid the foundations for the newest institution of higher learning in the State of Missouri.

The first years of the Bellerive Country Club in its new home at 8001 Natural Bridge reflected the gaslight era to a great degree. Members arrived by horse and carriage, swam in the lake and enjoyed one of Bellerive's most modern features, a Victrola.

World War I came soon after and with it went some of the club's younger members. Also during this period came prohibition, and a dry Bellerive followed soon after. The members, however, managed to avoid undue discomfort for, of course, no rule prohibited their bringing adequate refreshments into the club with them. So in spite of war and prohibition, Bellerive prospered and moved into the '20's to find more members, higher dues and its first real test.

Bellerive entered the '20's with the same spirit and extravagance as the rest of the nation. Fourth of July festivities included shooting off nearly \$300 of fireworks across the lake "for the benefit of the children," the notices said.

With the arrival of "Black

Tuesday" in 1929, however, the extravagance disappeared and the spirit was dampened. The membership dipped from 400 limit to 261.

The '40's brought another war and once again the keynote was

OFFICIAL TRANSFER

The Normandy Residence Center officially became the property of the University of Missouri at a dedication on the campus Sun-

day, September 15.

Among the 1000 persons attending the dedication were many dignitaries including John M. Dalton, Governor of Missouri, Dr. Elmer Ellis, President of the University of Missouri, Walter Lundholm, Mayor of Normandy, and Representatives from the 2nd, 4th, 6th, 8th, and 10th districts. Also attending were Representative Wayne Goode and Senator Robert Young who were responsible for the passage of Bill 153 through Congress.

Mr. Edward Monaco, President of the Normandy School District's Board of Education, served as emcee at the affair. After Reverend Jans J. ver der Graaf, Pastor of the Normandy Methodist Church gave the invocation, Mr. Monaco, gave a short history of the school.

Following Mr. Monaco's review, he presented the Honorable John M. Dalton with a gold key mounted on a plaque stating that his "interest unlocks doors to new educational opportunity." Governor Dalton stated that others deserved recognition for their efforts in founding a branch of the University of Missouri in St. Louis. He then went on to predict that by 1973, 50,000 students would be attending the four campuses of the university. Ten thousand of these students would be attending the St. Louis Campus.

James A. Finch, Jr., President of the Board of Curators at Missouri University stressed in his address that the university on the four campuses would be 'one' university not four distinct colleges.

Dr. Elmer Ellis, President of the University of Missouri opened his address by praising Governor Dalton and the state legislature. He went on to say that as funds were made available the St. Louis Campus would grow into a well-organized institution to provide low cost higher education for the St. Louis Area.

Mr. Monaco presented Dr. Ellis with a chrome shovel with the inscription "a great builder who will bring new educational opportunity to untold thousands."

After the dedication ceremonies, guests were invited to tour the building and view the three-dimensional model of the proposed campus development on display in room 108. Guest speakers and dignitaries received visitors on the patio and punch was served on the northwest tennis court.



The Committee of Twenty-Eight, citizens of Normandy, who were responsible for the organization and foundation of the four year branch of Missouri University, The St. Louis Campus and other dignitaries who attended the dedication ceremonies.

"cutback." After 1945, the big news was Bellerive's entrance into the sports world. In 1949 it sponsored the Western Amateur golf tournament and in 1953 the 50th annual Western Open.

Also during this time came the last big repairs on the clubhouse; \$18,500 to fix the leaky roof and the damage done to lower floors. In 1955, the increasing distance of the club from the majority of its members brought about the decision to move to Ladue and Mason Roads.

By the end of that year, 1955, 383 acres had been purchased at the new site at the cost of \$670,000, and by February, 1959, the sale for \$60,000 of the property at 8001 Natural Bridge was completed.

Thus did the Bellerive Country Club end its role in history of the St. Louis Campus and the Normandy School District begin its three years of hard work, planning and legislating in order to make Sunday, September 15 become a reality, the commitment of the Old Bellerive Country Club, Normandy Residence Center, to the University of Missouri-St. Louis.



Between 1000 and 1500 people attended the dedication ceremony despite threatening weather conditions.



Governor John Dalton predicts ten thousand students to attend the St. Louis Campus by 1973

Ford was still riding a horse and Wilber and Orville were still wrestling with bicycles, so most of the club's 208 members made their way on the Burlington Railroad, which fortunately stopped almost at the club's back door, 12 miles from Union Station.

Under increasing pressure to move the old Field Club from Bellefontaine Road closer to member's homes, club officers soon set their sights on the property at 8001 Natural Bridge. Originally, the land was part of the 800 acre estate of John Lucas. He called it "Normandy"



The St. Louis Campus, which was formerly the old Bellerive Country Club, as it exists today.

St. Louis Campus Plans Unveiled by Missouri U.



This sketch of the future sight of the St. Louis Campus includes, (1) three-story classroom-lab, (2) administration building, (3) library, (4) communications and fine arts building, and (5) student center. The plan was prepared by St. Louis architects Hellmuth, Obata and Kassabaum Inc.

Three Story Classroom-Lab. Building And Library Highlight Improvements

The launching of a four year branch of Missouri University led to the unveiling of Campus plans on Sunday, September 15. The three dimensional model was on display during the dedication ceremonies.

The nucleus of the master plan is the 53 year old clubhouse of the old Bellerive Country Club which was converted, four years ago, into the Missouri University-Normandy Residence Center.

From this modest beginning the architects of Hellmuth, Obata and Kassabaum predict a gradual but tremendous growth to a full scale campus.

A three-story classroom-laboratory building will be erected before September of 1965. The capacity enrollment for this time will be approximately 4,000 students. Plans have also been made for a 1,000,000 volume library with study facilities for 20 per cent of the student body.

An administration building, housing offices and data processing center coupled with a student center with dining facilities for 50 per cent of the students add to the grandeur of the envisioned campus.

HUBBELL jewelry Pendants
21 Normandy Shopping Center Rings Charms
C01-2806 Watch & Jewelry Repair

HA7-9432

HA7-9651

Kraft's Miracle Lounge

Famous For

Taste - Tempting Pizza

(Since 1952)

Enjoy the facilities of our air-conditioned
Rathskeller at your next Banquet or Party.
Accommodations for 10 to 100.



Frank X. Kraft

St. Charles Rock Road
at Ashby
St. Ann Missouri



Sophomores Emily Massa (left) and Barbara Bildner new co-captains of the cheerleaders.

"Victory, victory, is our cry." This and other cheerleading cries have been heard through the halls of the St. Louis Campus ever since cheerleading practice began Tues., Sept. 17, under the direction of sophomores Emily Massa and Barbara Bildner, new co-captains of the cheerleaders. All girls who are eligible are urged to try out for the new cheerleading squad. The girls are practicing with the cheers "Victory," "Beat" and "We're with you team so fight." Practice includes improvement of the jumps, splits, and arm movements which are necessary for the presentation of a good cheer. Practice is every Tuesday on the patio or in room 108.

Try outs will be held in approximately a month to allow sufficient time for the girls to practice. Judges of the try-outs will be: Bill Ebbinghaus, President of the Student Association, two appointed representatives of S.A., three faculty members, basketball representatives, and coach Bob Meyers. Cheerleaders will be selected on the basis of their ability to perform the cheers, their poise, and their personality. Five girls will be chosen, however, there will be no substitutes for the regular cheerleaders. The members

of last year's cheerleading squad were Barbara Bildner, Tammy Borrowitz, Jan Finazzo, Cookie Fitzgerald, Emily Massa, Leslie Schrier, Kathy Vasquez.

The cheerleaders will cheer only at basketball games. Girls wishing any further information concerning the group or practice should contact Emily Massa or Barb Bildner.

Air Force ROTC At Washington U.

All male students in good standing at the St. Louis Campus of the University of Missouri are eligible to participate in the Air Force ROTC.

Registration at Washington University and payment of tuitions is no longer required in order to take ROTC. Classes started September 23. Students interested in joining may call VO 3-0100, extension 4567.

Students are reminded their ROTC obligation is not precluded by their attendance at the St. Louis Campus. They will be subject to the same requirements as all incoming students upon transfer to any other college or university. Advisors should be contacted for details or any specific situation.

Bowling Team Begins with High Standards

The St. Louis Campus bowling team will begin its fourth and most highly competitive league season during the week of October seventh. As the new requirement of a 160 pin average per member as compared to last year's 150 pin average indicates, the league, which also has teams from Washington and St. Louis Universities, Eden, Concordia, and Parks College, has set its standards a bit higher. The league also has been reduced in size from twenty-four to twelve teams.

Team Captain Carl Doerr, a junior, will be joined by sophomores George Cull, Barry McClintock, John Nagel, and Mike Shepard, returning members from the 1962-63 team. New members are needed though, and prospects should call Carl Doerr at EV 1-3768 for more information.

While no starting date and time has yet been agreed upon by the participating teams, chances are the league will operate in the same fashion as last year, when bowling started at 10:30 a.m. on Saturdays at the Arena Bowl, 5740 Oakland Avenue.

One of the outstanding features of the league is its relative inexpensiveness. Although sanctioned by the American Bowling Congress, the league is able to operate at a lower cost than other winter leagues because no prize money will be given. Instead only money to buy a trophy for the first place team will be collected, allowing the bowlers to enjoy high caliber competition on a student's budget.

Mr Whealan Forms Jazz Discussion Group

Mr. Whealan of the English Department announced the formation of a jazz discussion and listening group. All students who are interested and willing to participate actively should meet in room 206 on Tuesday, October 1, at 2 p.m.

Football Campaign Oct. 2

The St. Louis Campus intramural football campaign will be kicked off Wednesday, October 2 with a meeting of all prospective gridders at 3 p.m. in the school cafeteria. There are lists posted in both the cafeteria and on the second floor bulletin boards for any boy who wishes to compete in the league. Gerald Stimson, intramural chairman in charge of the meeting, stated that at least 40 signatures are necessary in order to form the league. Anyone who cannot attend the meeting should contact Stimson before Wednesday.

The first games of the season are tentatively scheduled for Wednesday, October 9. Two games will be played each Wednesday and Friday after school at 3 o'clock. One playing field will be located north of the parking lot, and the other gridiron will be set up on the east side of the school.

Stimson hopes to form six teams with eight boys on each squad, or at least four teams with 10 members each. Under the proposed arrangement, each team will play the other squads at least three times.

Ship 'Loaf-a-long' Sends Out S.O.S.

The Good ship "Loaf-a-long" commanded by Petty Officer Raymond M. Schmidt 11, USN ret was run aground on the evening of Sept. 22, 1963. The incident occurred as "Sandbar" Schmidt and his crew were changing fuel tanks. The ships crew; Mr. and Mrs. Charles Barthelome and apprentice seaman Margie Doerr.

The crew, Schmidt reports, remained calm throughout the ordeal, especially after life jackets were handed out.

After the crew, returned to the city Monday afternoon, Schmidt was heard to say, "Sure it was dirty and unpleasant, but it sure beats going to classes!"

under regular touch football rules, with no conversions after touchdowns. Two 15 minute halves will constitute an official game. No football equipment will be allowed, and each team must supply a referee for each half of the action.

The championship team will receive a trophy engraved with each player's name. This award will be presented to the winners at either the Halloween dance or the following dance, depending upon the length of the season. The trophy will then become a permanent fixture in the school's trophy case.

No tackle football games will be allowed, and if any of the footballs disappear as they did last year, the balls are either to be returned or paid for.

Basketball To Begin in Nov.

Practice for the St. Louis Campus basketball team is expected to begin during the second week in November at the Normandy Junior High School gym. Coach Bob Meyers, Normandy High School instructor, hopes that anyone interested will try out for either the team or the managerial positions.

Meyers expects a twenty game season but at this early date the schedule is not yet complete. Among this year's opponents are the St. Louis Baptist College, Sanford-Brown Business College, Belleville Junior College, and the St. Louis Boy's Club. Last year's squad won the St. Louis Small College Conference by sweeping seven of eight league games. The team also, garnered a post-season victory in the St. Louis Boy's Club Invitational Tournament by beating Boy's Club in the final minute of play.

Returning squad members are Sophomores Bob Brookes, Gary Clark, Dennis Hansen, Bill Iselman, Charlie, Platipodis, John Sarantakis and Dave Willson.

CROWN INSURANCE COMPANY

Executive Offices
10 S. Hanley Road
Clayton, Missouri

Specializing in Hard to Place Risks:

SR Filings - Underage Drivers
Overage Drivers



For the Address of Ycur Nearest
CROWN AGENT Call Parkview 6-0667

See these Merchants for "OUTSTANDING" Values.

Anderson Music	Phelan Faust
Long Barber Shop	Holland House
Tailors	Harpers
Western Auto	Public Finance
Poly Clean Center	Best-Way Cleaner
Britt's Dept. Store	Bell Bros. Shoes
Walgreens	Toms Trains
Normandy Bank	National Food
LePetite Lounge	Hubbell Jewelry
James Texaco Serv.	Newstead Salon
Normandy Bowling Lanes	
Normandy Shoe Repair	
Visit Normandy Shopping Center Today	